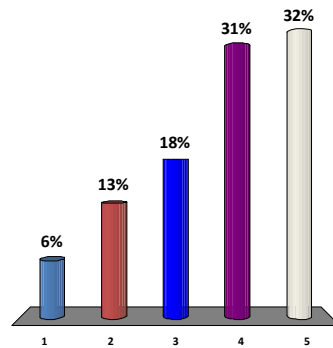


Using a scale of 1 to 5, with 1 being strongly disagree and five being strongly agree, please indicate your level of agreement with the following statement:

I believe a six-year integrated residency program will increase the **quantity** of CT surgery resident applications.

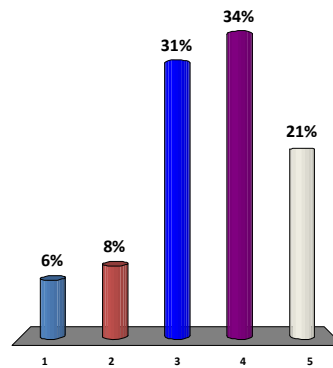
1. Strongly disagree
2. Disagree
3. Neutral
4. Agree
5. Strongly agree



Using a scale of 1 to 5, with 1 being strongly disagree and five being strongly agree, please indicate your level of agreement with the following statement:

I believe a six-year integrated residency program will improve the **quality** of the CT surgery resident applicant pool.

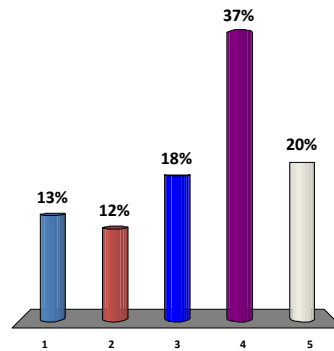
1. Strongly disagree
2. Disagree
3. Neutral
4. Agree
5. Strongly agree



Using a scale of 1 to 5, with 1 being strongly disagree and five being strongly agree, please indicate your level of agreement with the following statement:

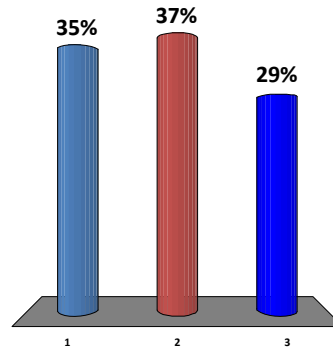
I believe recruitment strategies and incentives currently utilized by CT residency programs to attract residents are fair and ethical.

1. Strongly disagree
2. Disagree
3. Neutral
4. Agree
5. Strongly agree



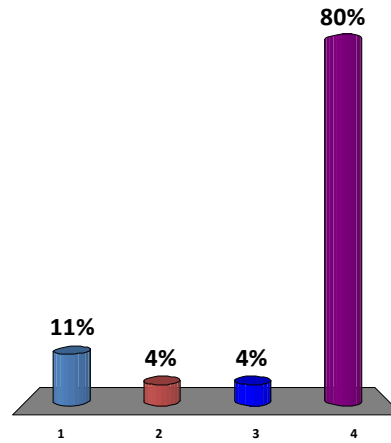
Do you feel the proposed ABTS mandate for a six-year integrated CT residency program will improve your chances for funding from your Designated Institutional Officer (DIO)?

1. Yes
2. No
3. Not sure



What effect have the ABTS case index requirements had on your residency program?

1. Program cut residency positions to offer more cases to fewer residents
2. Program added rotations to offer more cases
3. Extended program from two to three years
4. No effect



Can your program currently meet ABTS case index requirements in the general thoracic operative pathway?

1. Yes
2. No
3. Unknown at this time

