

# Simple Pig Heart Model for Simulation

George L. Hicks, MD  
URMC, Rochester, NY

A stylized silhouette of a mountain range in a darker shade of teal, located at the bottom right of the slide.

# Why

- ◆ It is fun
- ◆ Residents and students love it
- ◆ It is inexpensive
- ◆ It is a good teaching tool

HEY, YOU'LL NEVER KNOW  
UNLESS YOU TRY

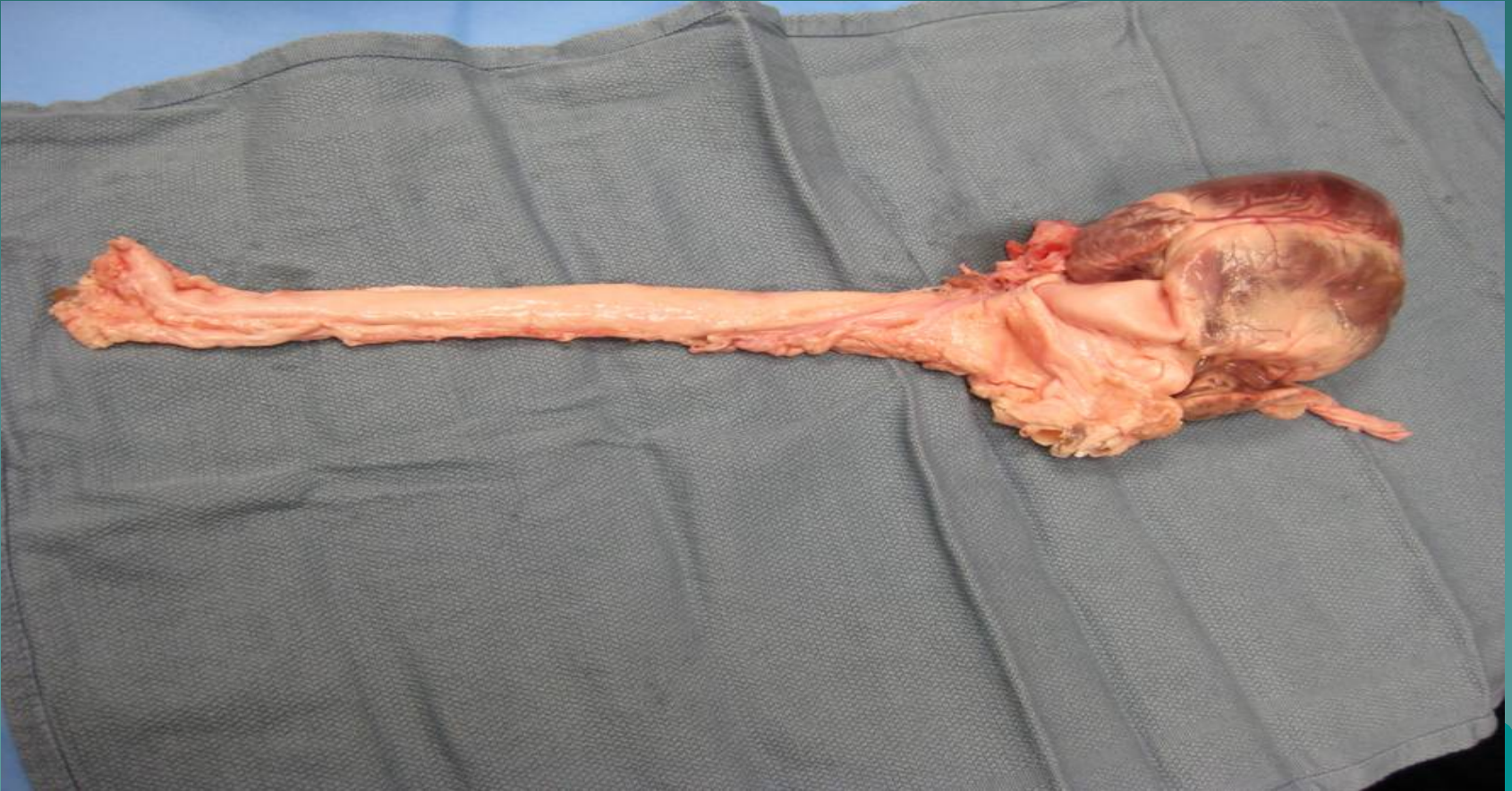


# Contact Info

- ◆ Richard Forbes
- ◆ ATSCO
- ◆ 214-213-9580
- ◆ [rif@atsco.us](mailto:rif@atsco.us)

# Clean Off Aorta

## Use Aorta as needed



# Dissect PA from Aorta

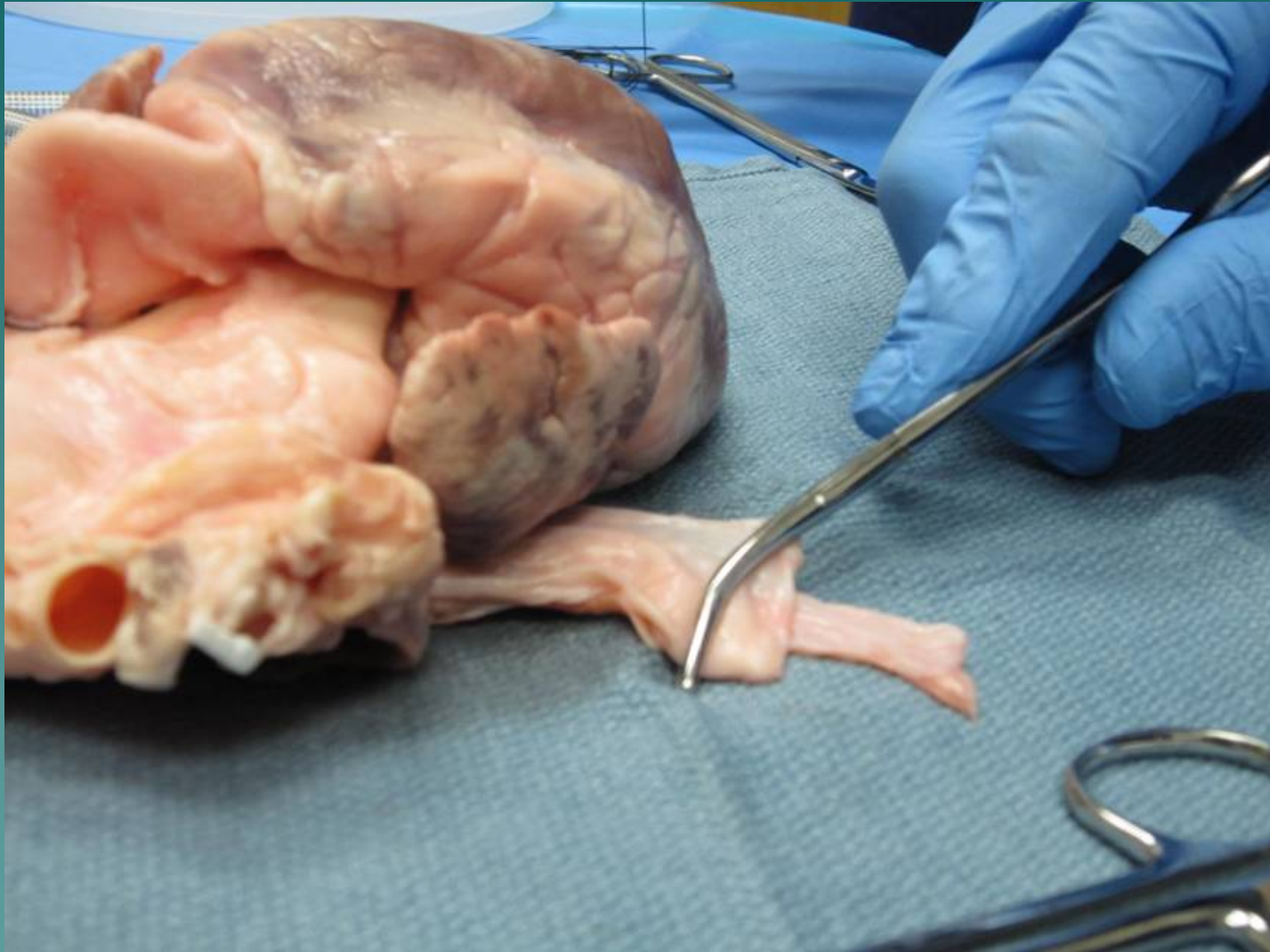


# Tie Off Distal PA

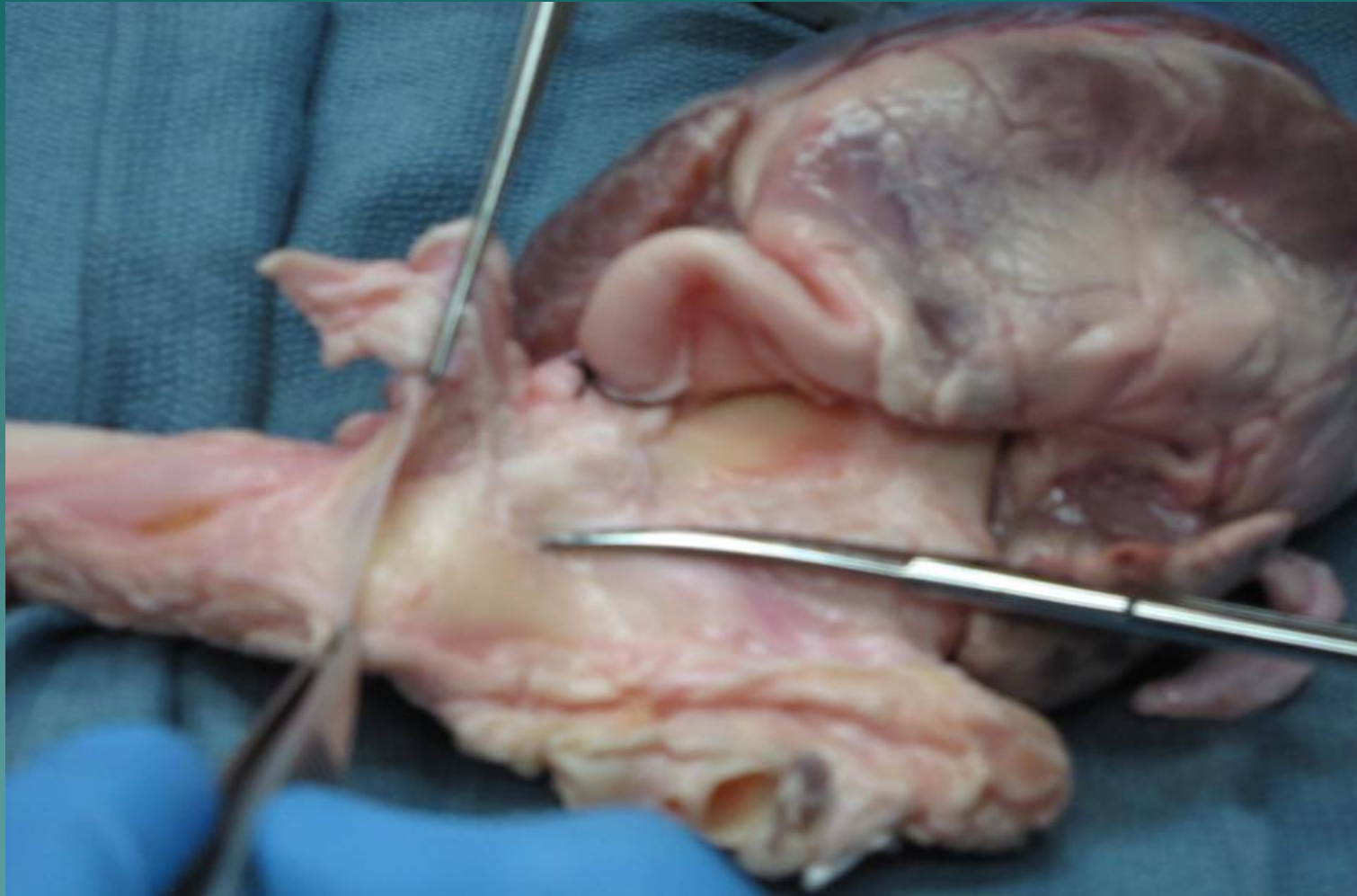




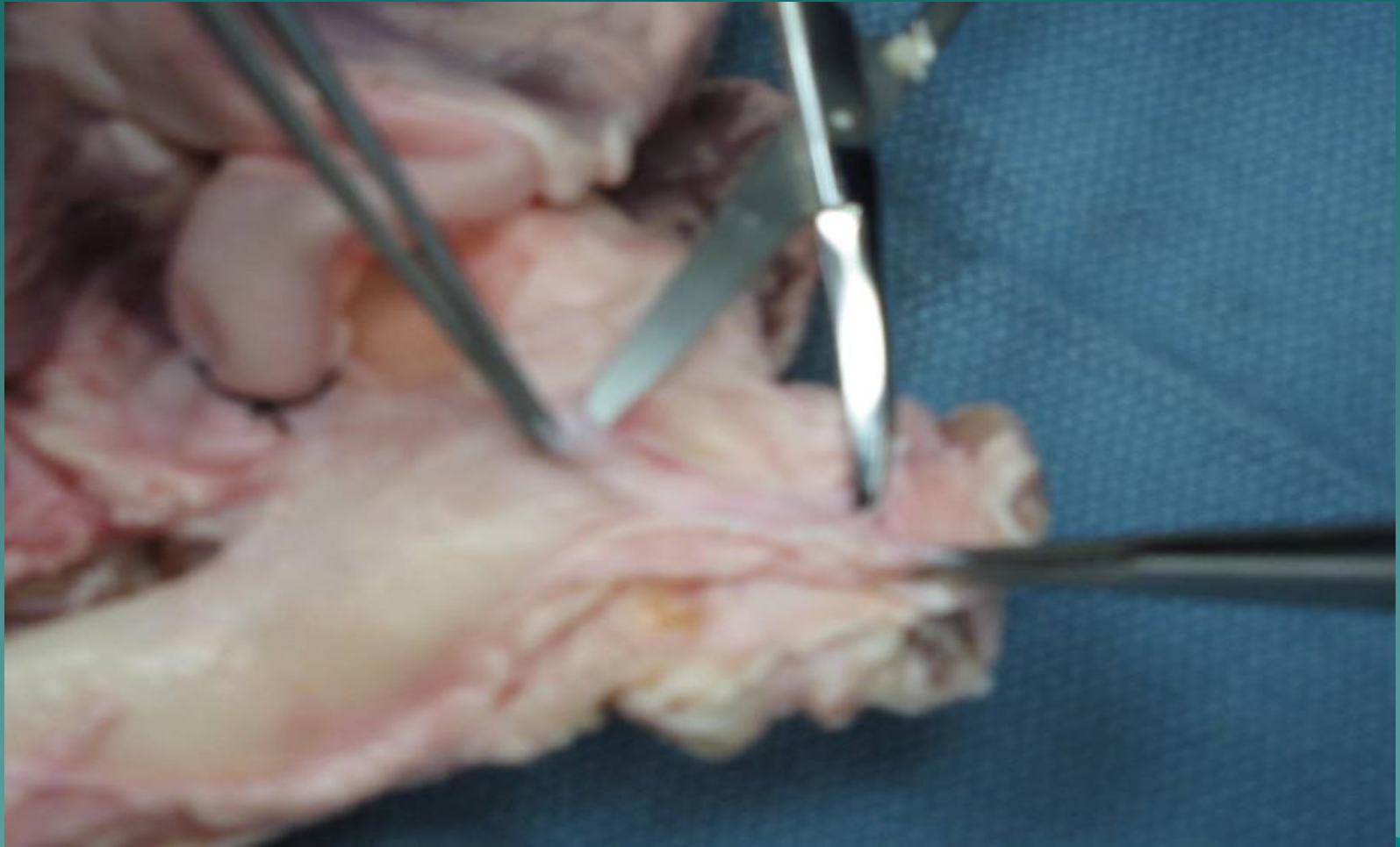
# Tie Off IVC



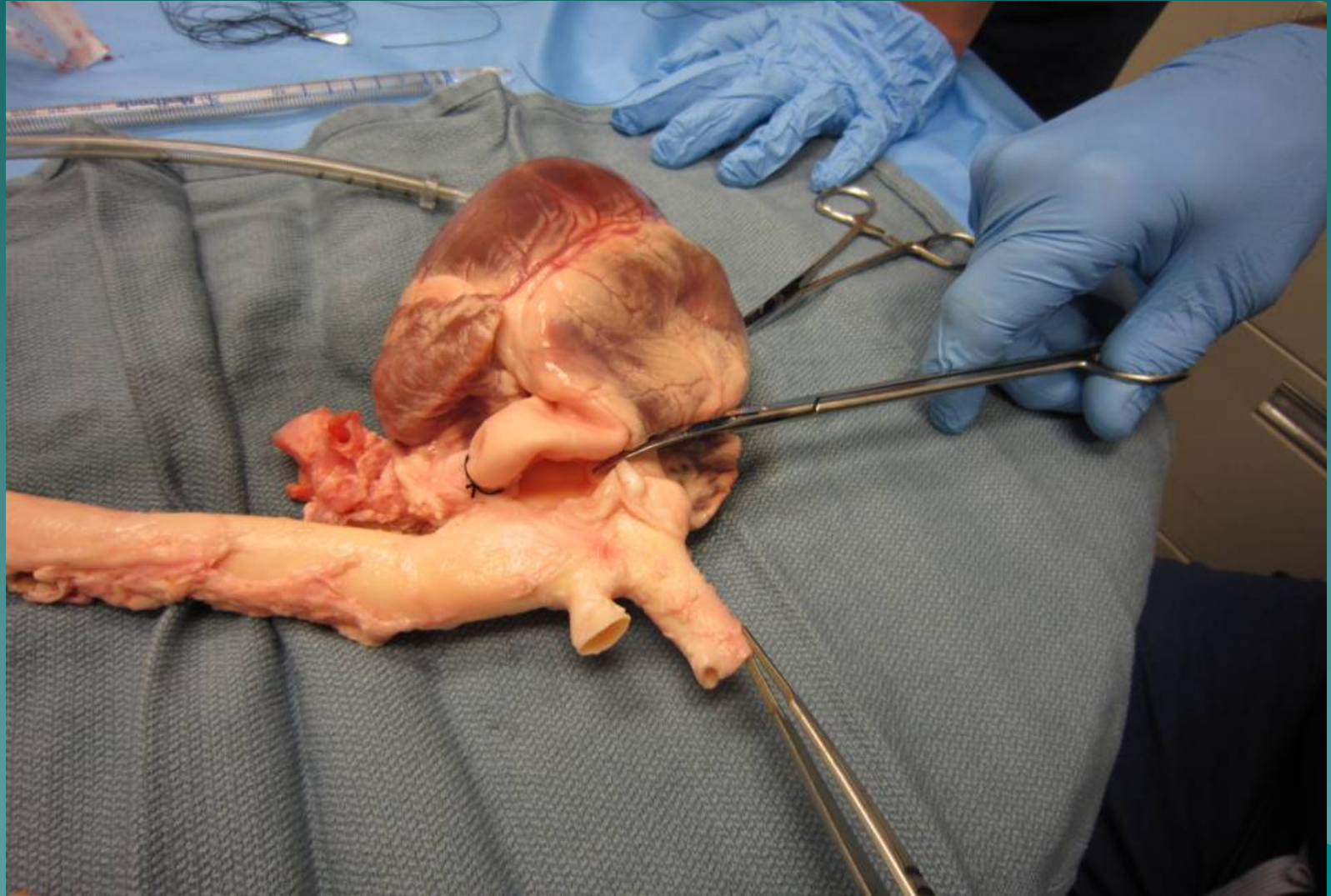
# Clean Off Aorta



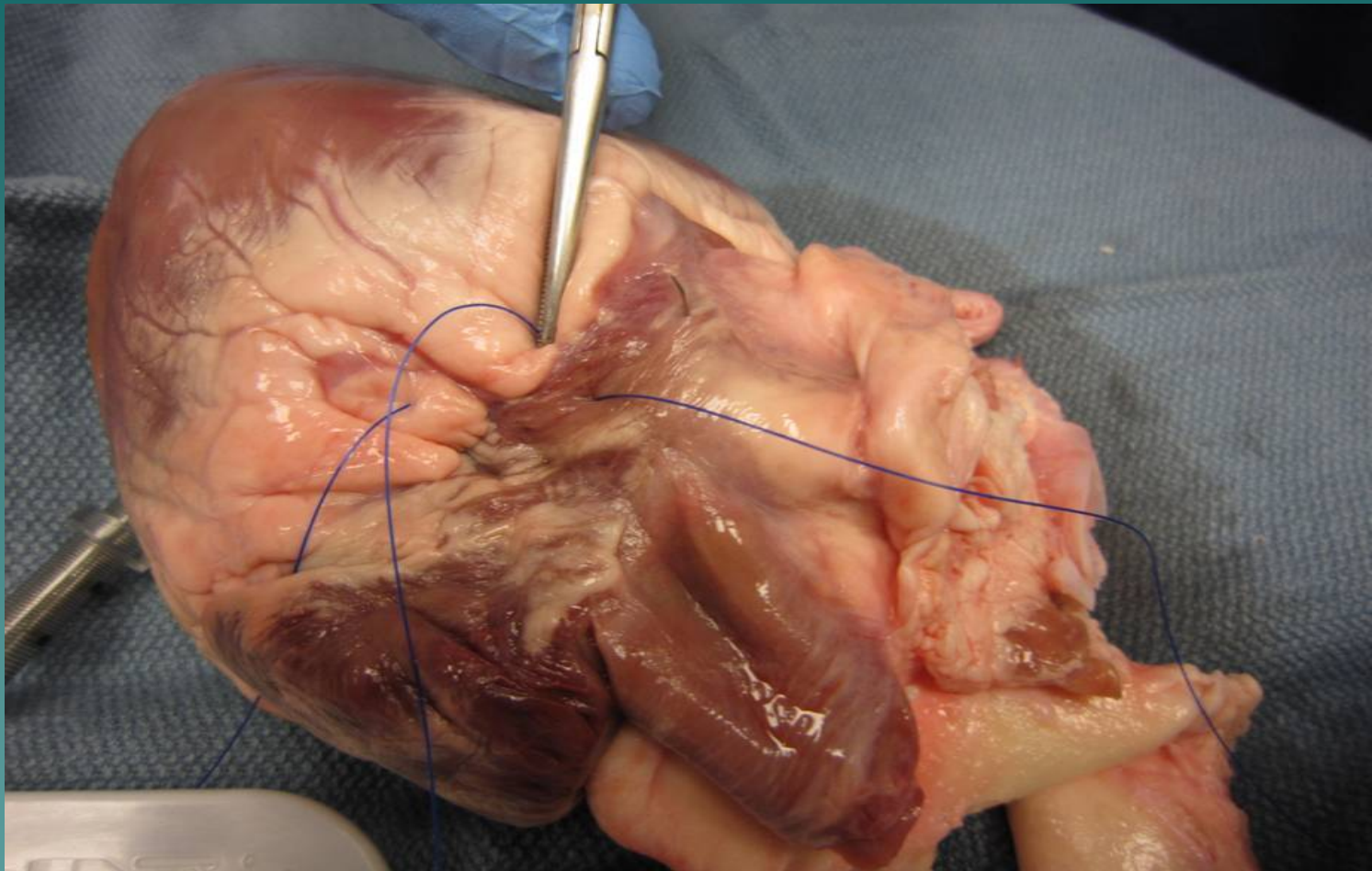
# Clean Off Great Vessels

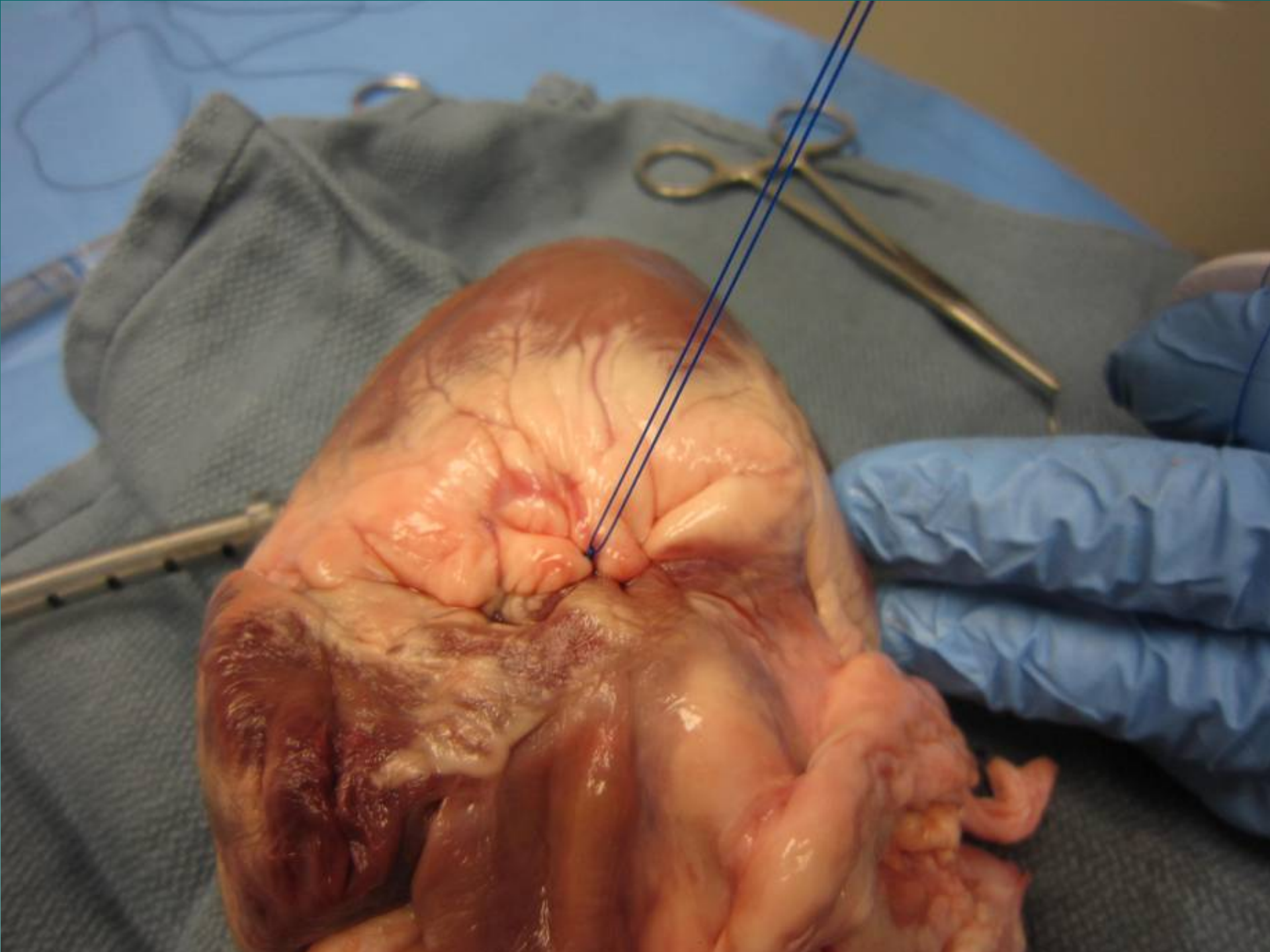


# Tie Off Great Vessels

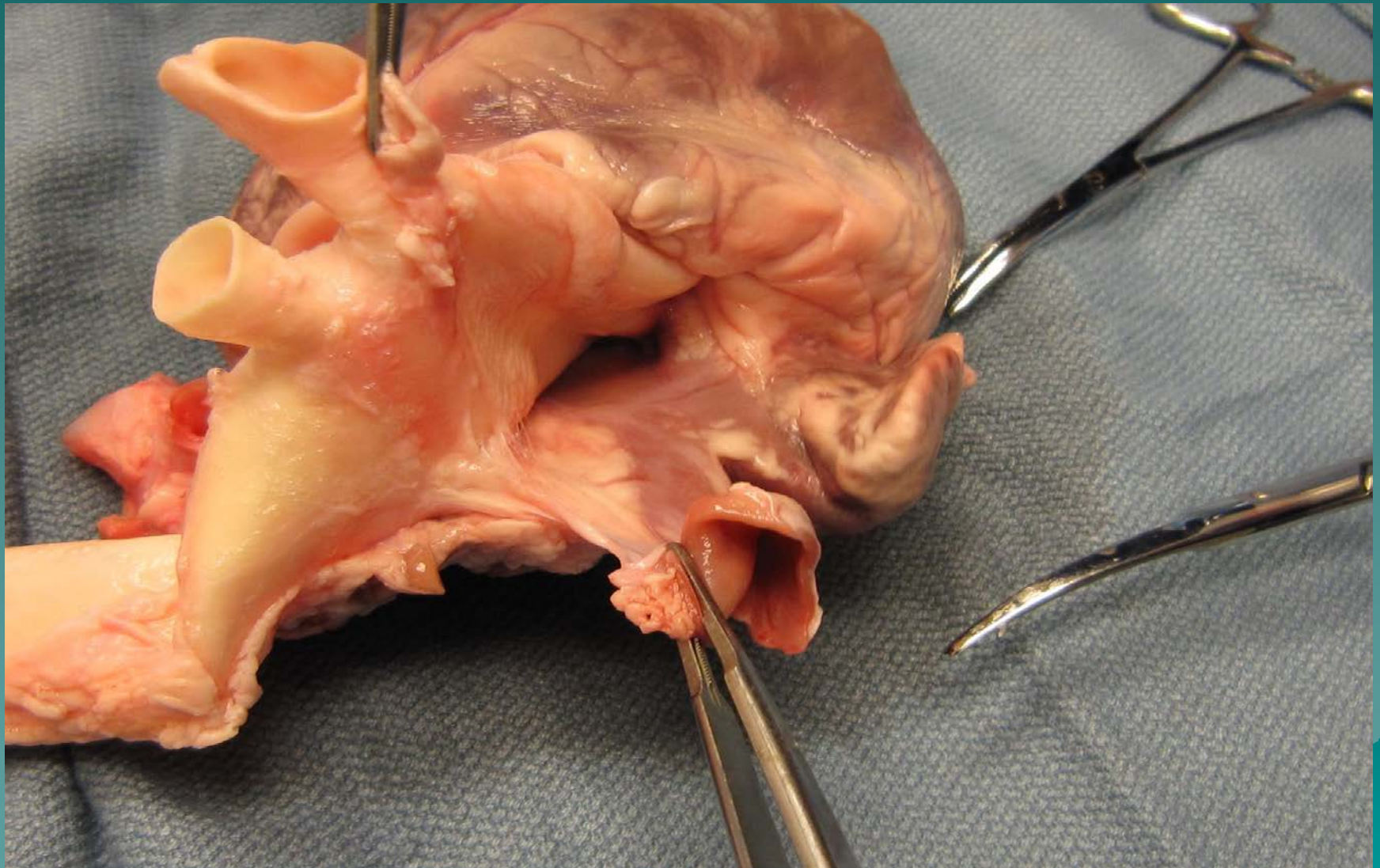


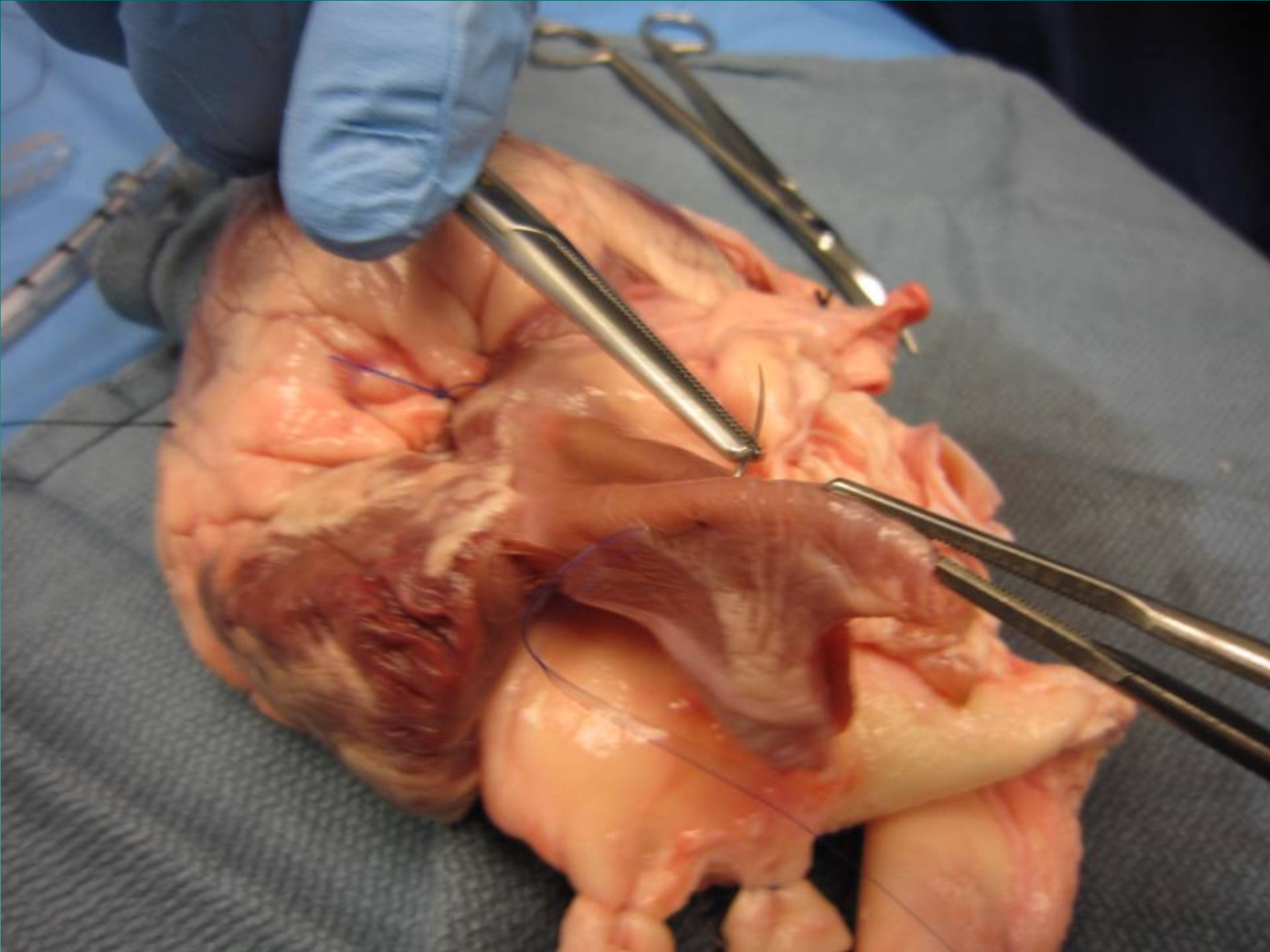
# Tie Off Coronary Sinus

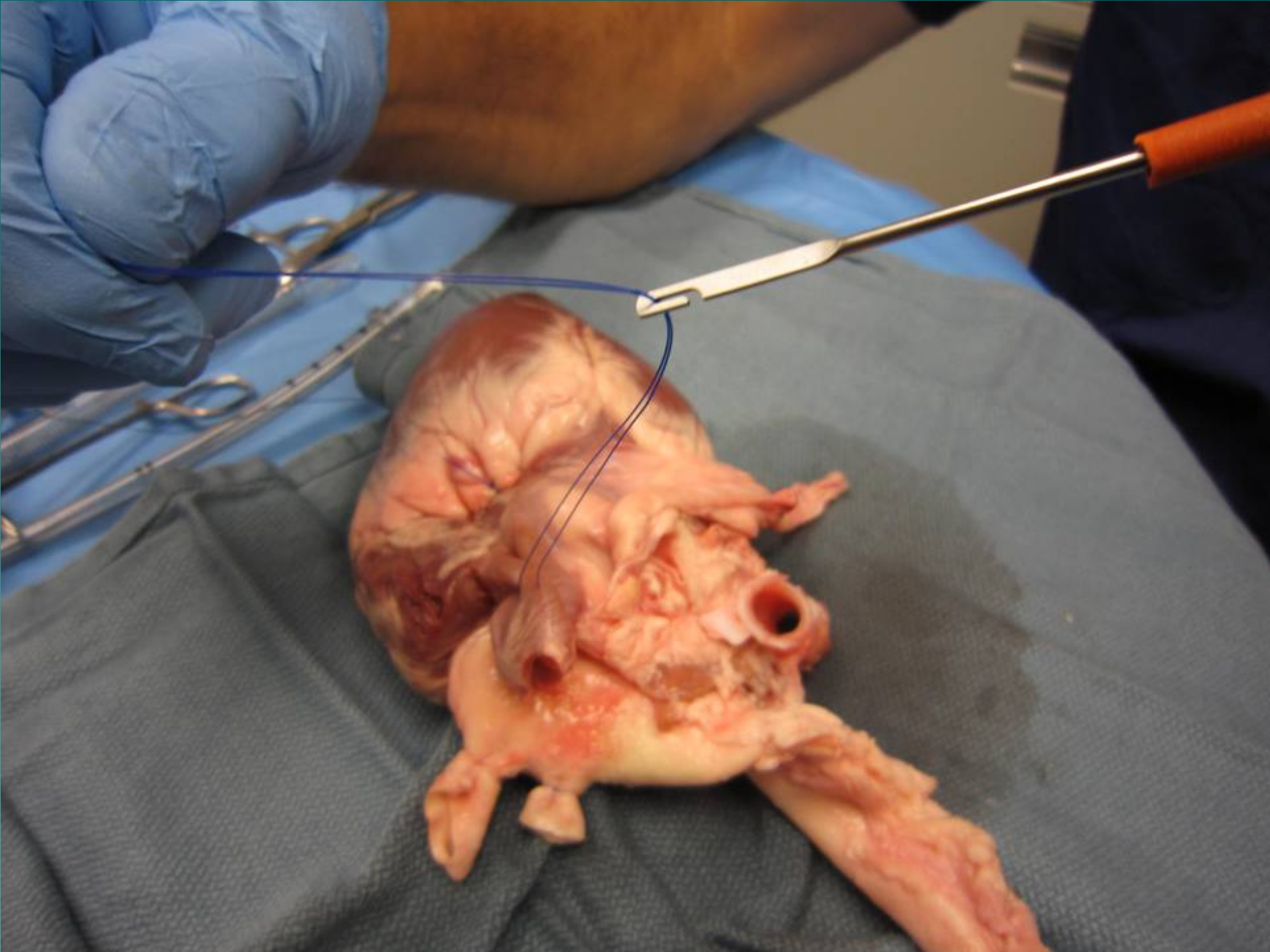




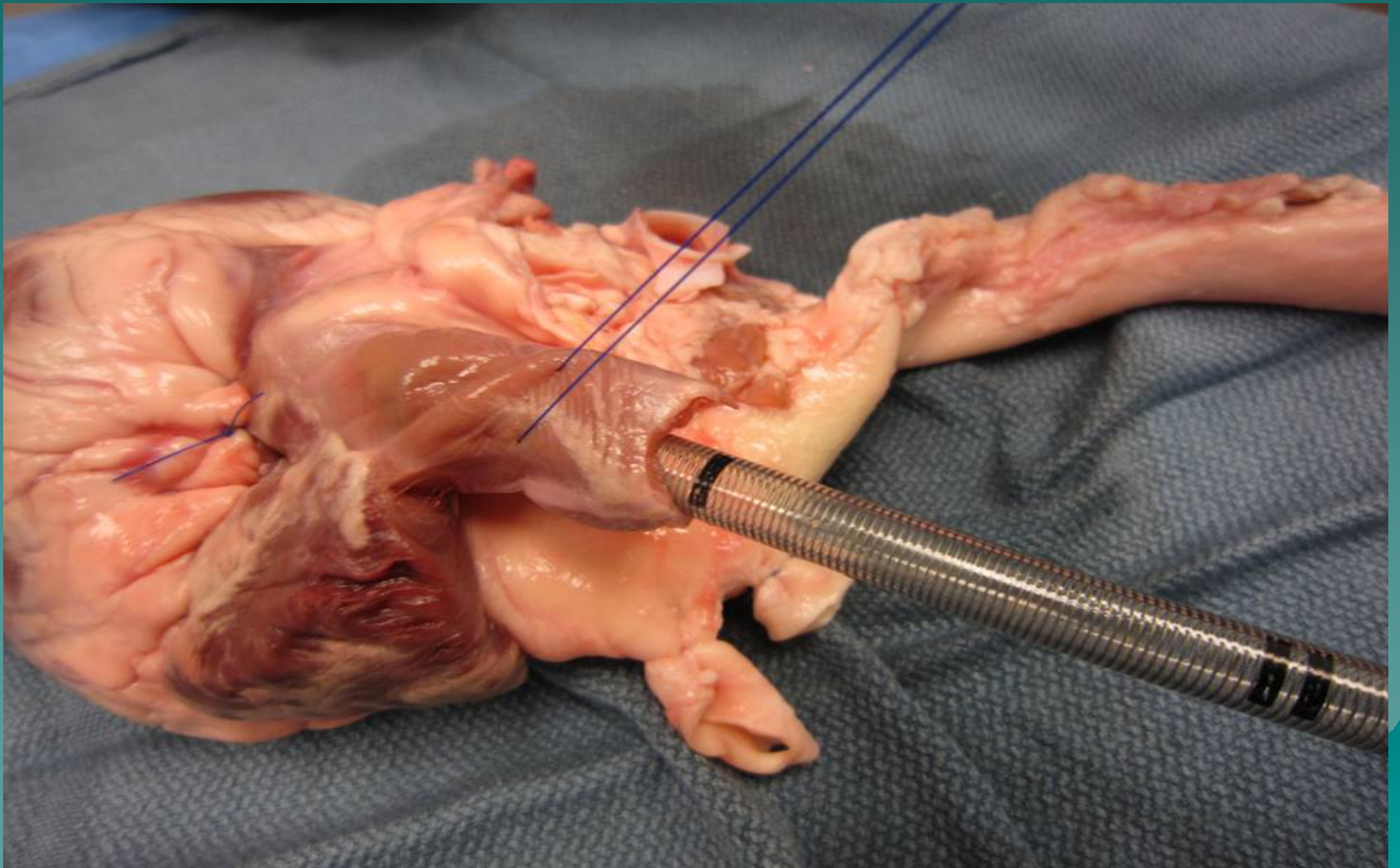
# Pursestring/Snare SVC



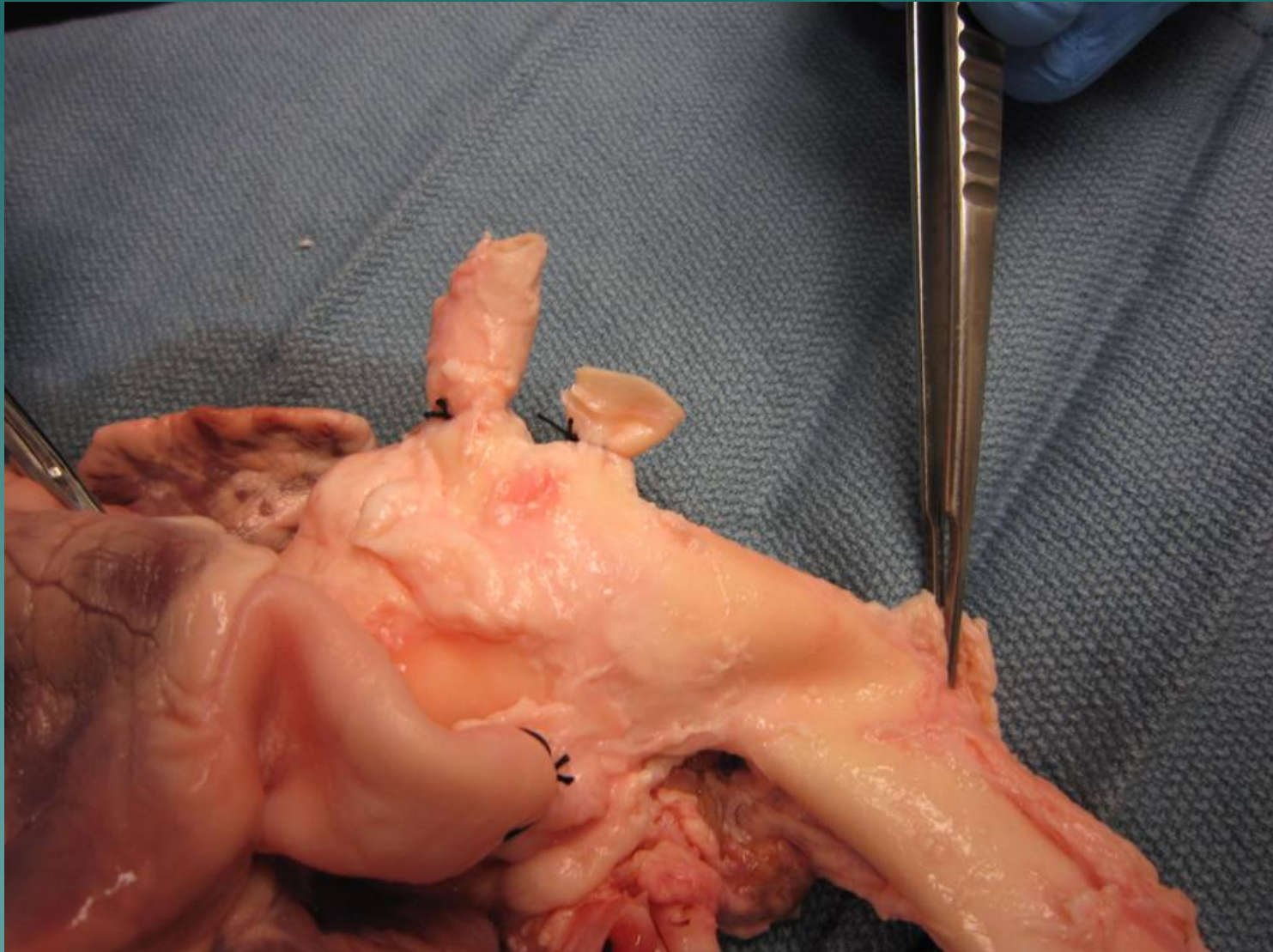




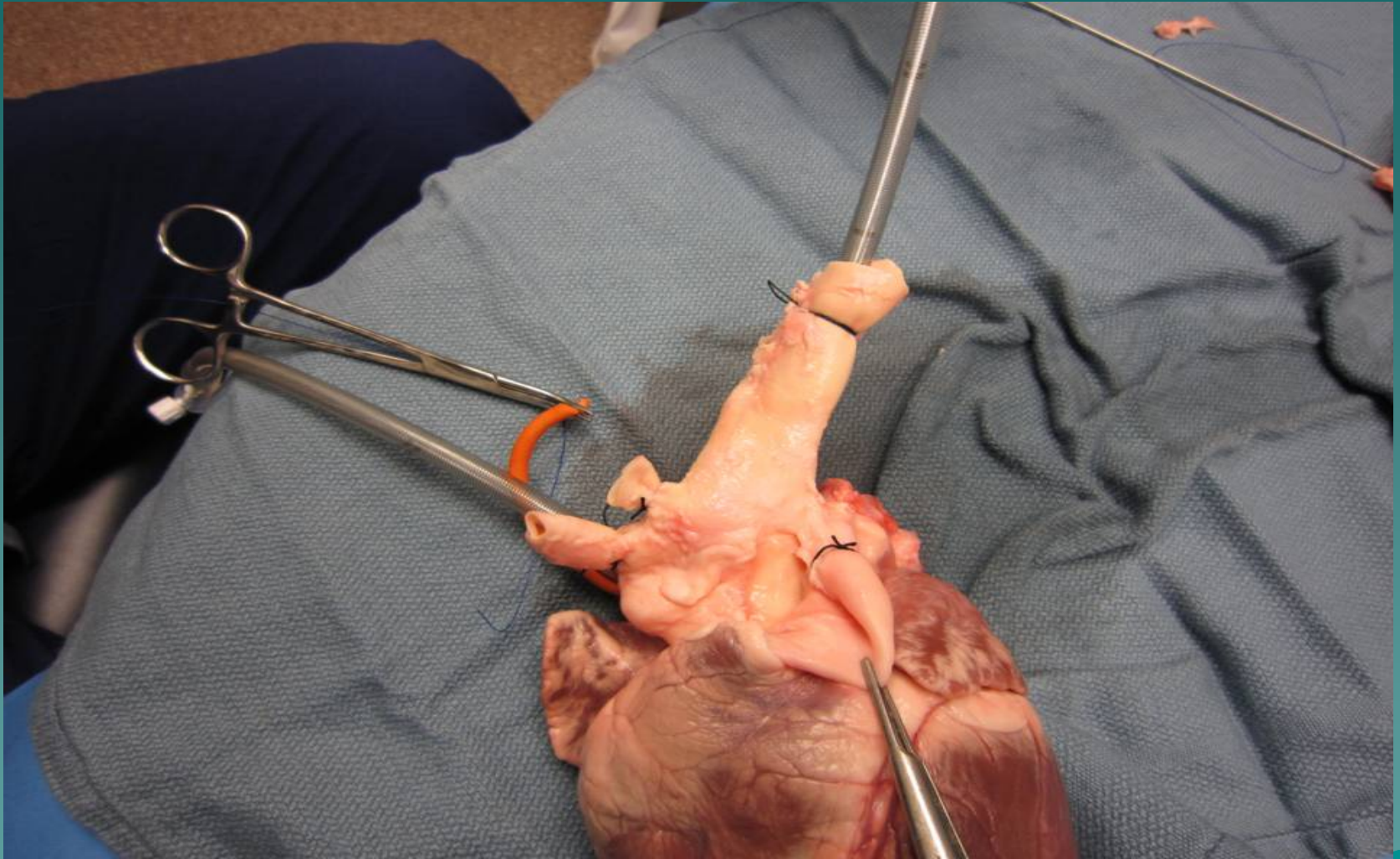
# Place Cannula in SVC



# Divide and Cannulate Aorta



# Final Preparation



# Place in Pan or Pericardial Well



# Perfuse with Pressurized Bag



# Have Fun



